

A Flower Study

Key Question

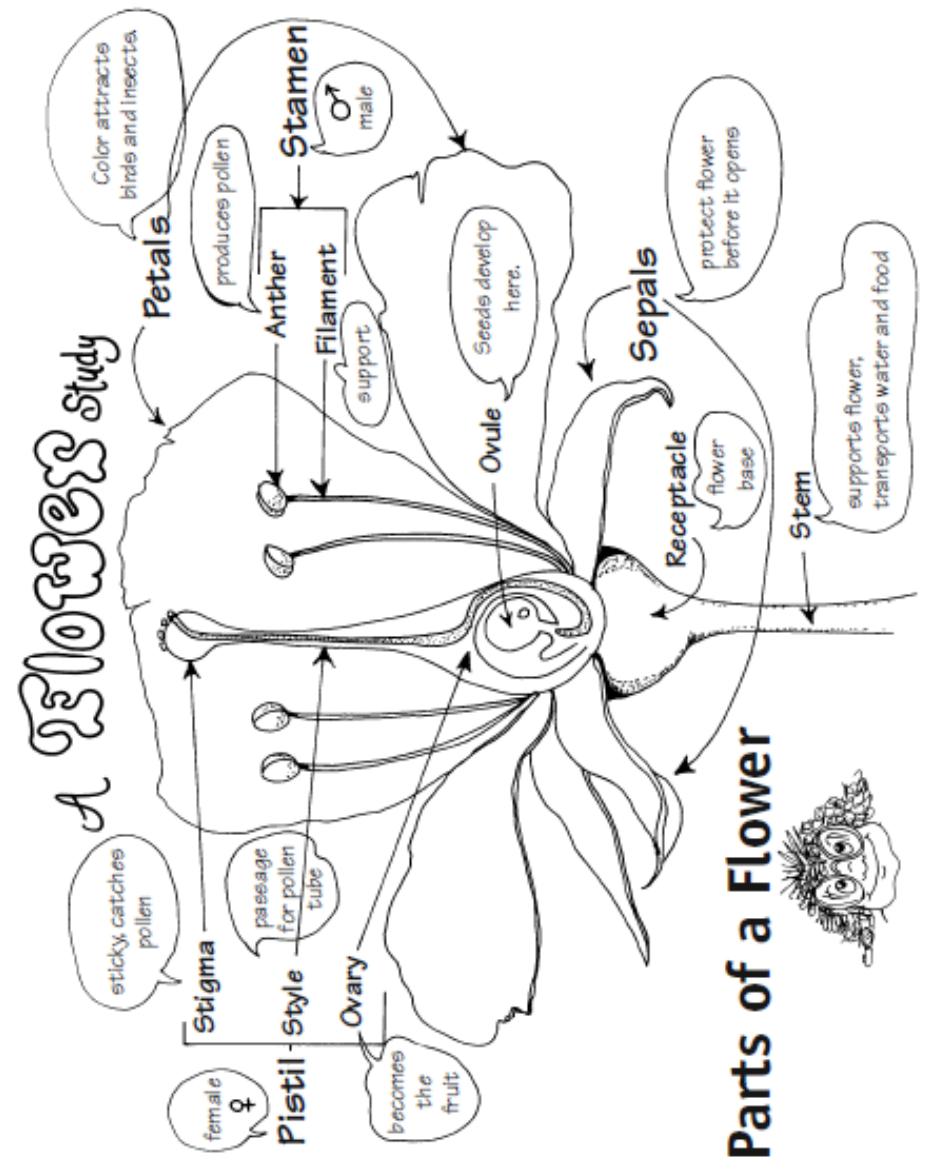
How do flowers, seeds, and fruit develop in a plant?



Learning Goal

Students will:

- identify parts of a flower and their function in developing seeds.



A Flower Study

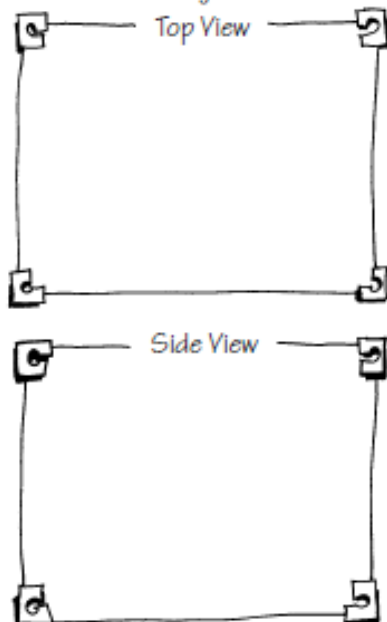


1. Get a close-up look at a flower. Study the flower from all angles with a hand lens.

Observations:



2. Use pencil and colors to sketch your flower.



3. Use your notes to write a description of your flower so that anyone could pick it out from a bunch.

A Flower Study

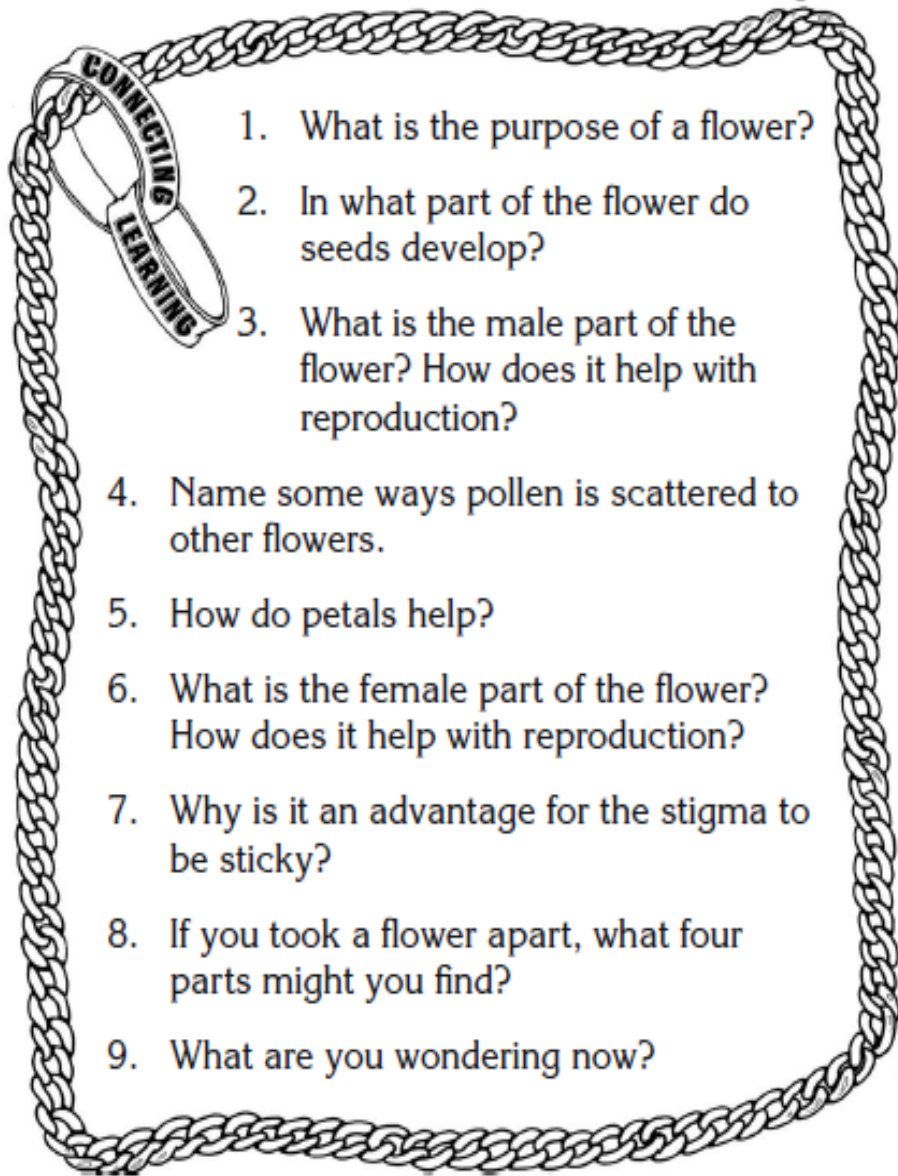
Carefully remove each flower part. Sketch, count, and measure.



Flower Part	Sketch	Number (count)	Color	Length (average)
Sepals				
Petals				
Stamen	anther			
	filament			
Pistil	stigma			
	style			
	ovary			
Receptacle				
Stem				

What is the function of each part of the flower?

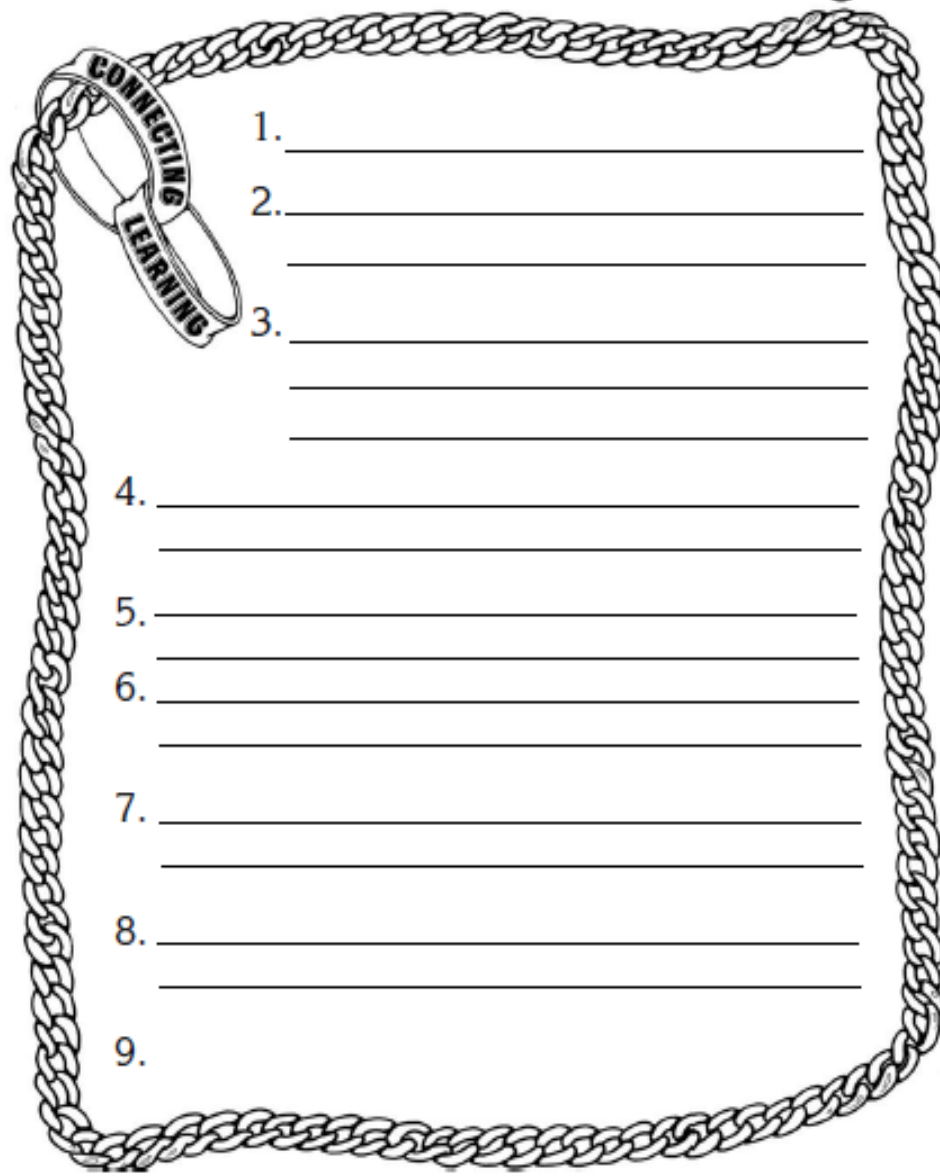
A Flower Study



1. What is the purpose of a flower?
2. In what part of the flower do seeds develop?
3. What is the male part of the flower? How does it help with reproduction?
4. Name some ways pollen is scattered to other flowers.
5. How do petals help?
6. What is the female part of the flower? How does it help with reproduction?
7. Why is it an advantage for the stigma to be sticky?
8. If you took a flower apart, what four parts might you find?
9. What are you wondering now?

Answers to

A Flower Study



1. _____
2. _____
3. _____
4. _____
5. _____
6. _____
7. _____
8. _____
9. _____