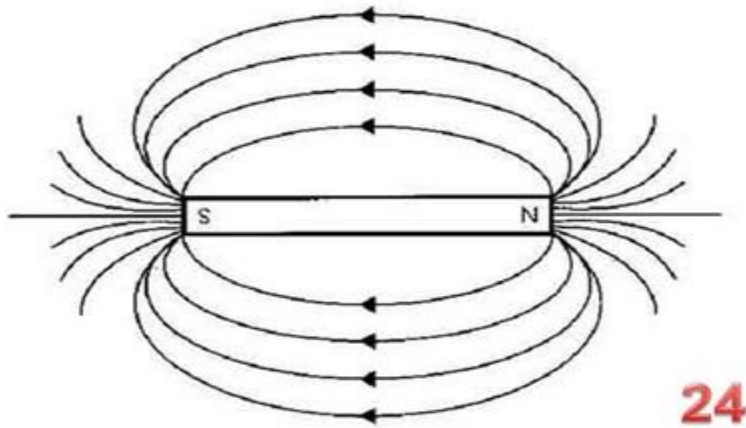
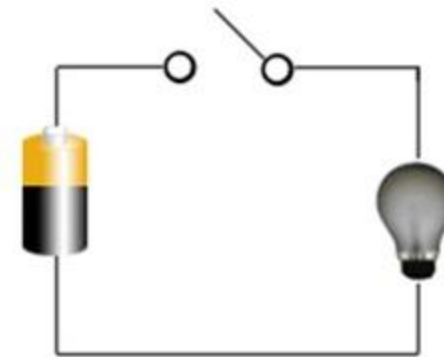


Energy Week 9 Warm Up Slides 24-38

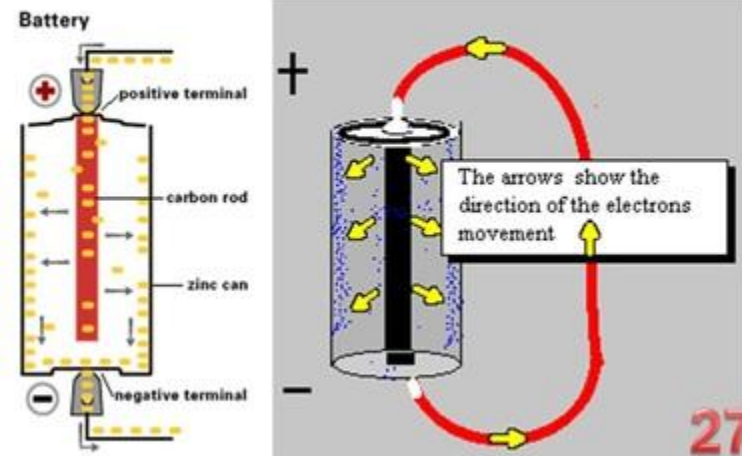
(M-F = explain pictures 2 slides a day)



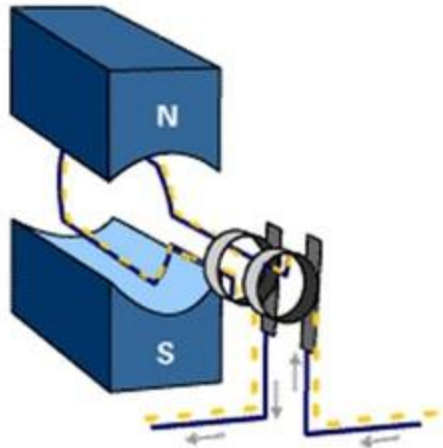
Coil of Wire



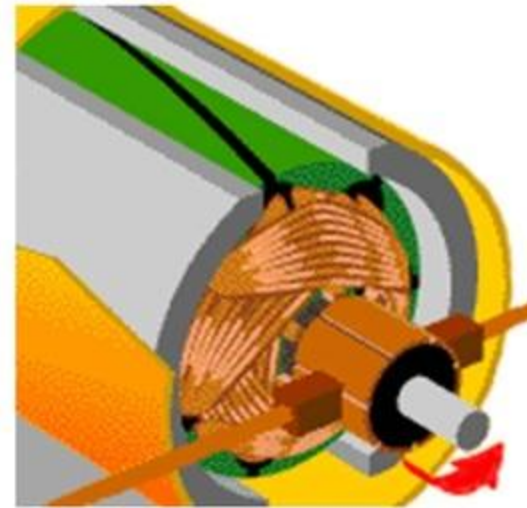
Batteries



Generator

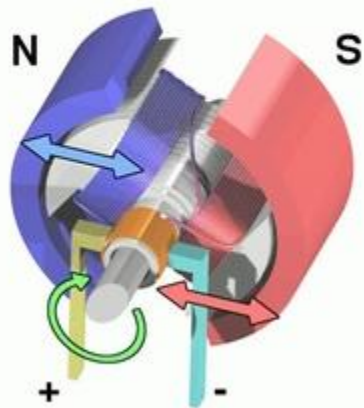


28

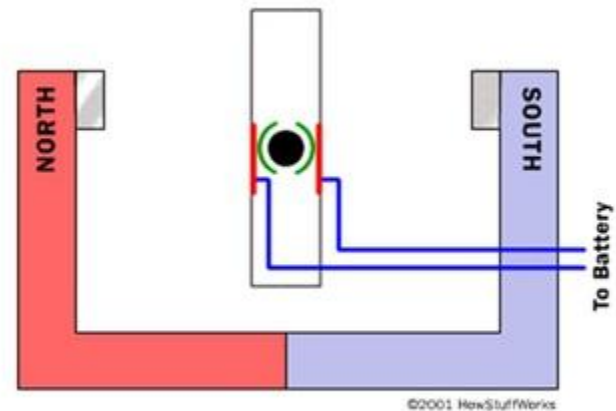


30

Simple Motor



29



31



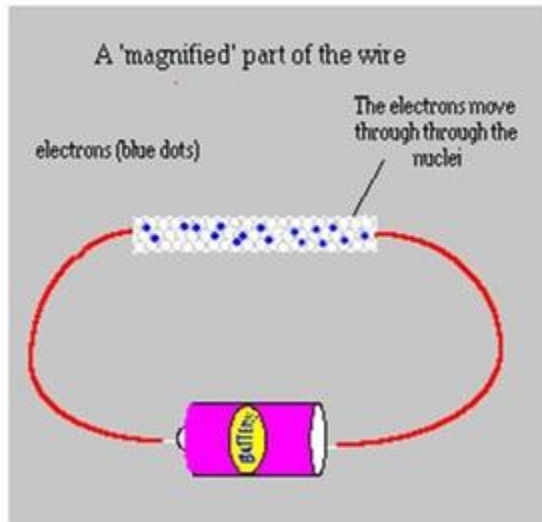
32

WARM UP-

1. HOW DOES A GENERATOR WORK? EXPLAIN.

2. HOW DOES A SIMPLE MOTOR WORK? EXPLAIN.

34



33

What Did I Learn About Inclined Planes?

- Less effort force (EF) required to pull a load if the ramp is lower (less friction & gravity)
- Ramps are used to reduce effort force, but add distance
less EF, longer distance

35

Pulleys

- Make work easier in 2 ways:
- Change the direction of the EF
- Change the EF needed
- 2 or more pulleys reduces the EF needed & controls the direction of the EF
- 1 fixed pulley- same EF, different direction

Ex: flag poles, ships' masts

36

Notes

Steps to Technological Design

1. Need or problem identification
2. Problem or solution design
3. Implementation of design solution
4. Evaluation

37

WARM UP-

**Create a wacky sentence
to remember the 6
types of simple machines!**

| | |
|----------------|--------------|
| Pulley | Screw |
| Lever | Wedge |
| Inclined Plane | Wheel & Axle |

38