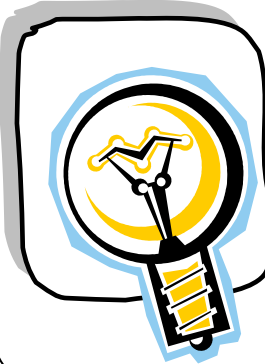




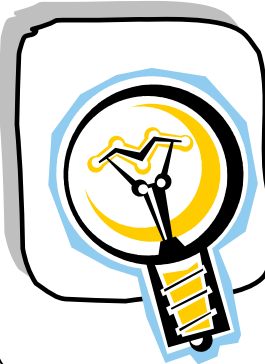
What type of heat transfer occurs through direct contact?



CONDUCTION



What type of heat transfer occurs through circulating currents?



CONVECTION



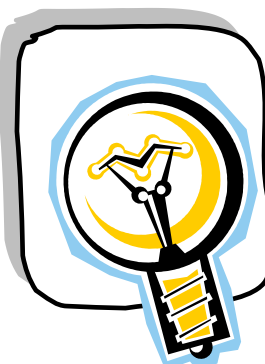
What type of heat transfer does not require a medium?



RADIATION



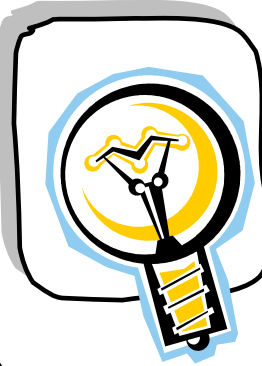
What is the ability to do work?



ENERGY



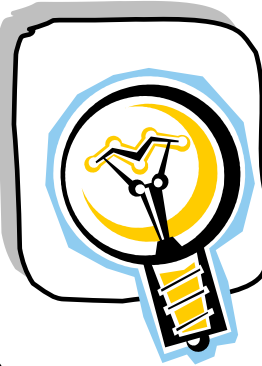
This law states that energy can neither be created nor destroyed- only transformed.



THE LAW OF CONSERVATION OF ENERGY



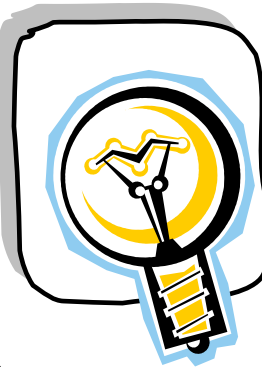
What is the energy of an object due its motion?



KINETIC ENERGY



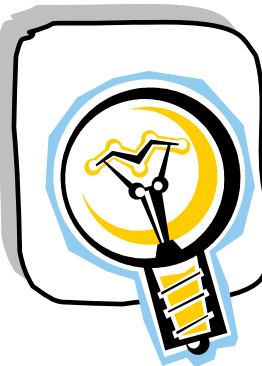
What is the energy of an object due to its position?



POTENTIAL ENERGY



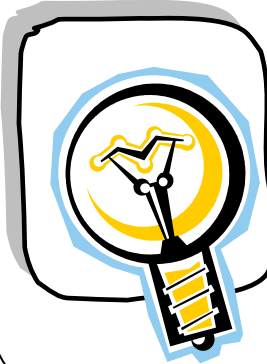
What type of energy is due to the transfer of thermal energy?



HEAT ENERGY



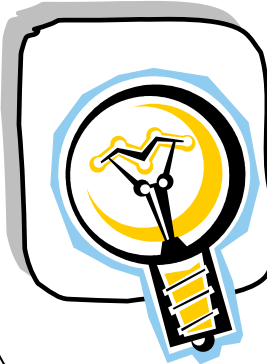
What type of energy provides heat and light for the Earth?



SOLAR ENERGY



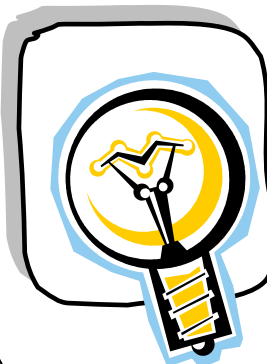
What devices are used to convert solar energy into electrical energy?



SOLAR CELLS



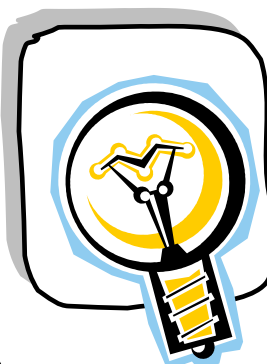
What type of energy is stored within the particles of matter?



CHEMICAL ENERGY



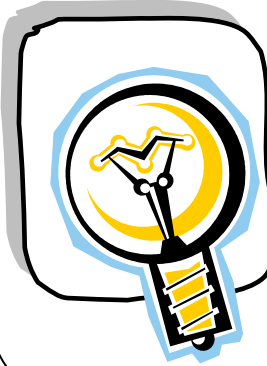
What type of energy flows through an electric circuit?



ELECTRICAL ENERGY



What type of energy is due to both the position & motion of an object?



MECHANICAL ENERGY



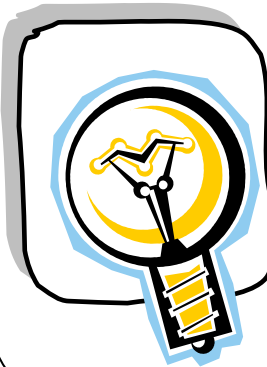
What is the force of attraction or repulsion of magnetic materials?



MAGNETISM



What is the area surrounding a magnet that can attract or repel objects?



MAGNETIC FIELD



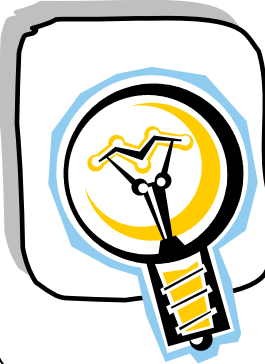
A coil of wire spinning around a magnet or vice versa can form this.



ELECTRIC CURRENT



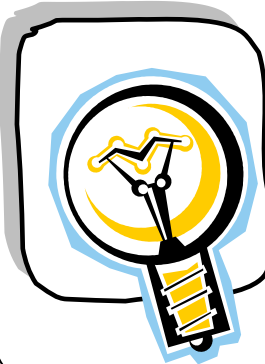
An electromagnet that uses mechanical energy to produce electricity?



GENERATOR



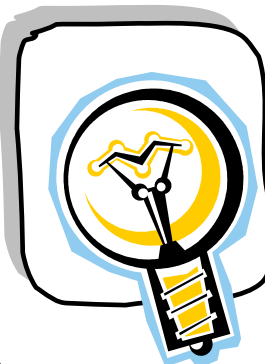
An electromagnet that uses electricity to produce mechanical energy?



ELECTRIC MOTOR



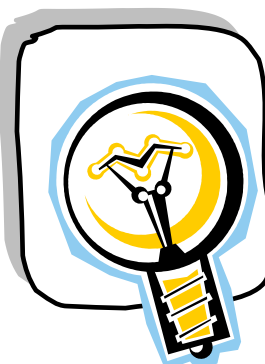
The ability to apply a force to an object and move it a distance?



WORK



The SI (metric) units used to measure the force of an object?



NEWTONS (N)



The SI
(metric) units
used to
measure the
work done on
an object?



JOULES (J)



How is work
done by an
object or on
an object
calculated?



WORK=
FORCE x
DISTANCE
(W=FxD)



What is the
instrument
used to
measure
force?



SPRING
SCALE



What are
devices that
are used to
reduce the
amount of
effort force?



SIMPLE
MACHINES



Which simple machine consists of a rigid bar placed over a fixed point (fulcrum)?



LEVER



What is a fixed point used to move a lever?



FULCRUM



Which simple machine consists of a grooved wheel and rope?



PULLEY



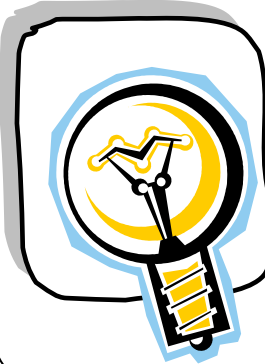
Which simple machine consists of a sloping surface used to reduce the amount of effort force to lift an object?



**INCLINED
PLANE**



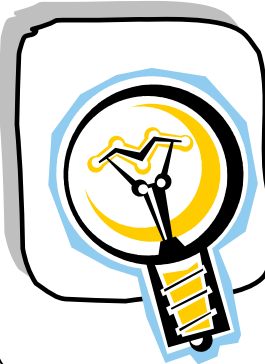
Which simple machine consists of 2 circular objects?



WHEEL & AXLE



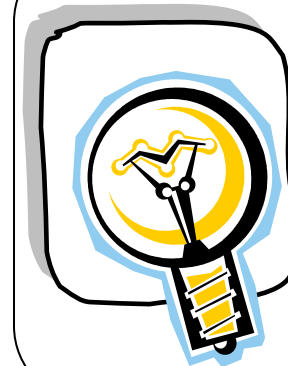
What types of devices consists of more than one simple machine?



COMPLEX (COMPOUND) MACHINES



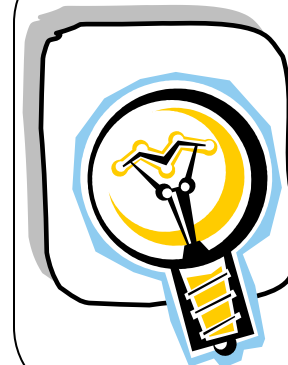
?



word



?



word