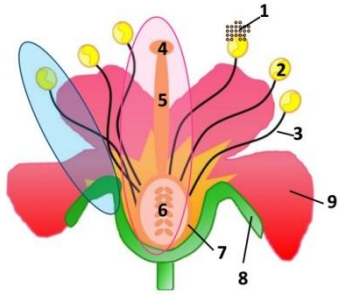


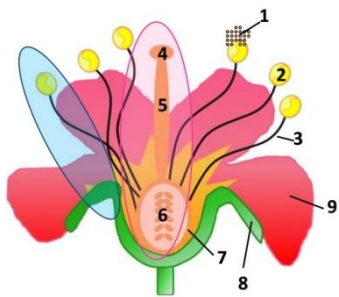
Identify the part and function of #1.

Ovules- fancy name for egg cells



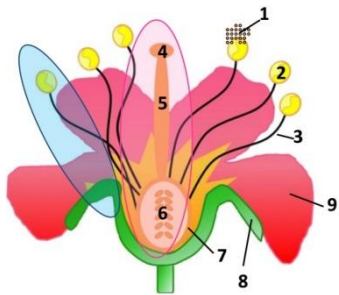
Identify the part and function of #2.

Ovary- the part of the pistil that contains the eggs cells



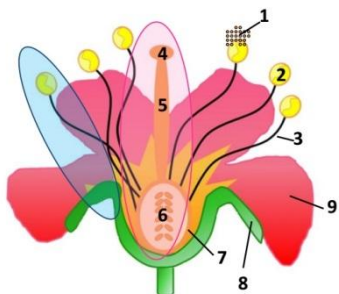
Identify the part and function of #3.

Sepal- the part of the flower that protects the bud before the flower blooms



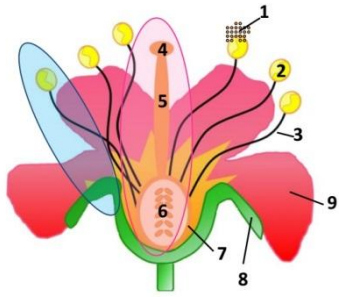
Identify the part and function of #4.

Petals- the colorful, aromatic part of a flower that attracts pollinators such as bees and butterflies.



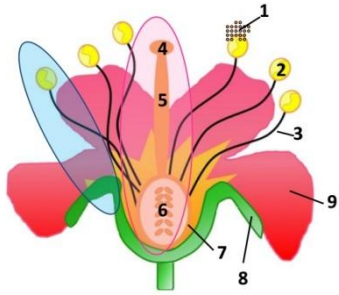
Identify the part and function of #5.

4-6 represents the Pistil
2-3 represents the Stamen



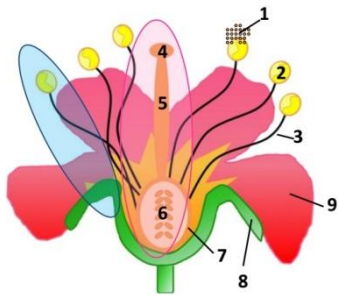
Identify the part and function of #6.

Pollen- the male reproductive cells for plants (sperm cells)



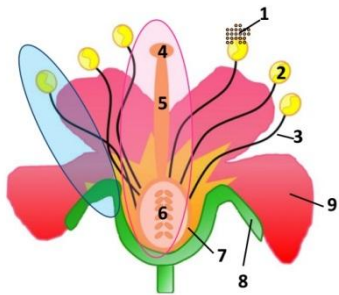
Identify the part and function of #7.

Anther- the part of the stamen that produces pollen



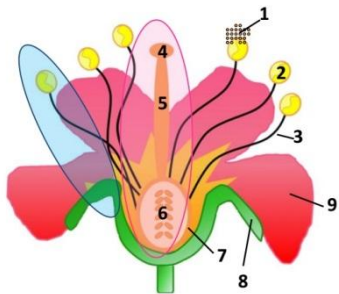
Identify the part and function of #8.

Filament- the part of the stamen that supports the anther



Identify the part and function of #9.

Stigma- the part of the pistil that is sticky and catches the pollen



What is the name for the part that represents 4, 5, and 6? Name for the part that represents 2 and 3?

Style- the part of the pistil that supports the stigma