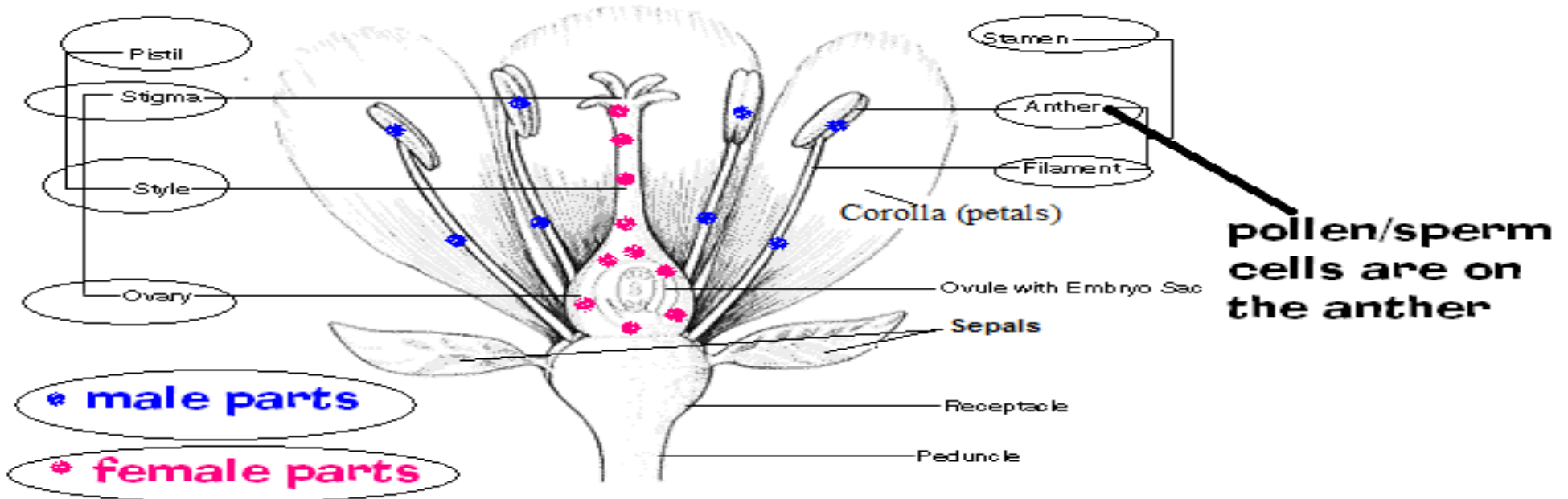




Label the Flower Parts



Monocot	Dicot
Fibrous roots (like our corn) 	One long tap root (like our lima bean) 
vascular tissue arranged randomly without any shape (overused pin cushion)	vascular tissue arranged in a circle (honeycomb shape) in the stem
Parallel veins in long/slender leaves	net-like veins in wider leaves
plant parts/flowers in groups of three	plant parts/flowers in groups of fours or fives